



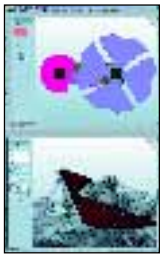
CAD and PDM, Booth 7505. Embedding design data management in 3D CAD, Solid Edge Insight augments mechanical design tools with data vaulting, revision management, engineering change orders and BOM management. **EDS PLM Solutions**, Maryland Hts, MO. **Free info—Circle 403.** www.rsleads.com/203df-403

Web collaboration, Booths 6447 & 6900. This web-native application enables internal teams, design partners and outsourced suppliers to collaborate around a BOM framework, with no required software beyond a web browser. **bom.com**, Mountainview, CA. **Free info—Circle 404.** www.rsleads.com/203df-404



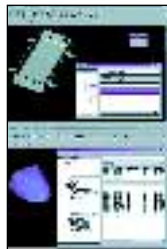
CAD/CAM, Booth 7511. Overdrive CAD/CAM v.6 will be launched at NDES. Revisions include expanded collaboration and interoperability; extended solids, surfacing and assembly control; enhanced user interface; and new tooling and milling functions. **VX Corp**, Pittsfield, MA. **Free info—Circle 408.** www.rsleads.com/203df-408

3D CAD, Booth 6900. Enhancements to SolidWorks 2001 Plus include 4D motion simulation, mating diagnostics and large assembly associative design tools. Time-saving editing and viewing tools are also included. eDrawings enables



users to project 2D design data over a 3D model. Additional sheet metal tools are available, including the ability to create and edit hems, create complex flanges, and convert tabs into flanges. **SolidWorks Corp**, Concord, MA. **Free info—Circle 400.** www.rsleads.com/203df-400

Specialized CAD, Booth 7911. Specializing in capturing non-geometric design data that is not customarily included in CAD models, EnCapta 2.0 software offers connectivity to enterprise databases and tight integration with PDM, FEA, ERP, cost estimation programs, etc. FiberSIM 4.0 composite ma-

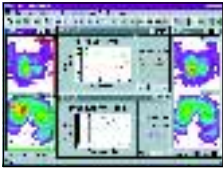


terials C A D software suite is similarly upgraded. B o t h CAD programs include XML tools for collaboration. **Vistagy Inc**, Waltham, MA. **Free info—Circle 402.** www.rsleads.com/203df-402

Data interface, Booth 6861. Processor-based Micro 2100 series multi-sensor field remote stations are versatile, accepting multiple different sensor types and ranges of analog inputs. They are equipped with stand-alone, on/off controllers and alarms. Alternatively, outputs can be switched from software-generated alarms or controllers. They can be

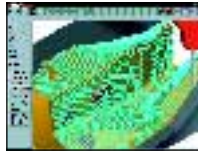


connected to their host computers via wires, modems or radios. **Vespo Inc**, Thompson Ridge, MA. **Free info—Circle 409.** www.rsleads.com/203df-409



Tactile sensing, Booth 7845. An Application Programming Interface (API) offers real-time control of 2000 parallel streams of data in the

I-Scan System 5.0 tactile pressure system. Applications include control and operator safety systems. **Tekscan Inc,** Boston, MA. **Free info—Circle 407.** www.rsleads.com/203df-407



CAD/CAM, Booth 7906. Mastercam V9 offers increased capabilities throughout the family of CAD/CAM products, including

the Finish Project toolpath (pictured) that provides a consistent finish following the natural curve of surfaces and/or solids. **CNC Software Inc,** Tolland, CT. **Free info—Circle 405.** www.rsleads.com/203df-405



Software manual, Booth 7919. Doctor Walt's **CADKEY 20+ Primer** leads both the experienced CADKEY user and the novice through the hundreds of new features, and a completely revamped interface of the new generation of CADKEY products. Its 262 pages contain copious full-color illustrations and easy-reading text, simplifying training for this new generation of CADKEY products. **Conceptual Product Development Inc,** W Caldwell, NJ. **Free info—Circle 410.** www.rsleads.com/203df-410



Hi-res prototypes, *Booth 8338.* The FDM Maxum machine is now capable of producing rapid-prototyped parts at a resolution of 0.005 in. per layer in polycarbonate and ABS. Toolpath building has also been improved in the software. **Stratasys Inc,** Eden Prairie, MN. **Free info—Circle 411.** www.rsleads.com/203df-411



4D CAD, *Booth 6911.* Windows-based visualNastran 4D 2002 animates 3D CAD drawings, allowing rigid body

dynamics and motion-related stress analyses. It supports most CAD systems through industry standard file formats. **MSC Software Corp,** Santa Ana, CA. **Free info—Circle 406.** www.rsleads.com/203df-406



3D printer, *Booth 8767.* Featuring a large build volume of 20- by 24- by 16-in. and inexpensive build materials, the Z810 Large Format 3D printer provides high-speed, versatile, full-color prototypes. A full-size manifold can be printed in 4 hours, while a full-size V6 engine block can be built in less than 15 hours. Color printing can be used to map FEA data on the 3D part. Molds can be created from printed parts. **Z Corp,** Burlington, MA. **Free info—Circle 401.** www.rsleads.com/203df-401